

# -86°C SUPER FREEZER SOFUPSF- 838 C

## INTERNAL FEATURES



**Stepped door frame design**  
Reduce cold air leakage and ice buildup

**Keep the cold inside**  
Advanced internal VIP panels flexible and efficient silicone sealings firmly lock the cold air inside.

**Access port**  
For extra monitoring device

**Enhanced shelf design**  
SS shelf supports 50kg

**Lock the cold air**  
Inner door closing pressure can be adjusted by the handle

**Heavy duty hinges**  
Garantee 10 years of door body without deformation

**Compartment doors**  
Stainless steel and 27mm thick PU foam-filled inner doors for better insulation

**Complete SS chamber**  
Robust stainless steel body for high sample safety and easy cleaning

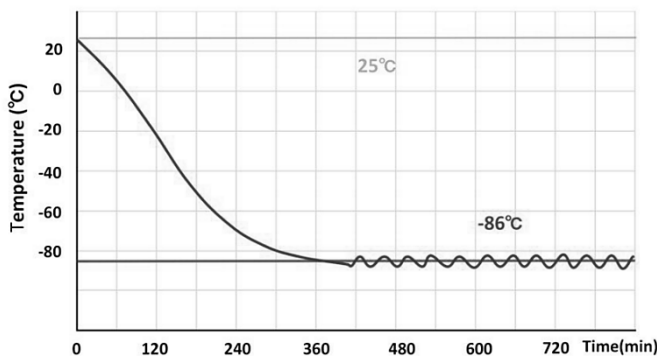
**Vacuum release port**  
For quick re-access to samples

**Inner door gaskets**  
Low temp. resistance flexible silicone sealings recude cold leakage

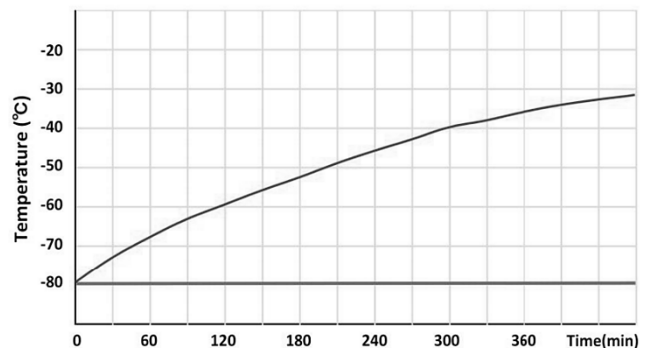
**Detachable design**  
Inner doors can be easy removal and cleaning

**Door frame heating**  
Effectively prevents ice buildup

## TYPICAL PERFORMANCE CHARACTERISTICS IN 25°C AMBIENT



Pull down times.



Warm up times.

# SPECIFICATIONS

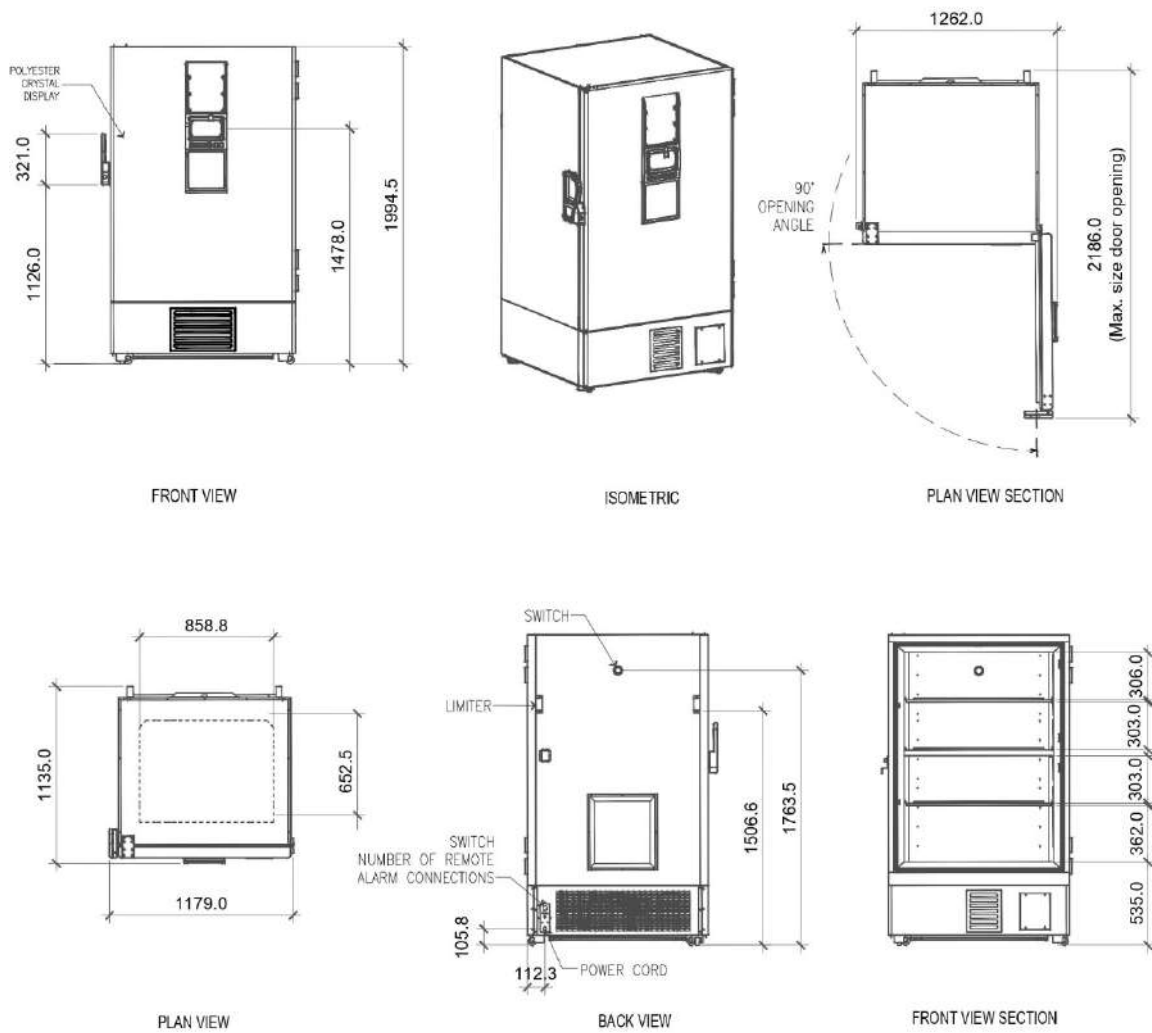
| BASIC                                     |   |
|---|---|
| Stainless Steel Shelves Quantity          | 3   |
| Cooling Method                            | Direct Cooling                                    |
| Defrost                                   | Manual  |
| Temperature Range (°C)                    | -40~-86   |
| Ambient temperature (°C)                  | 10~32   |
| Display                                   | 7" LCD Touch Screen                               |
| Access port QTY/ Diameter                 | 1 / 25MM  |
| USB Interface                             | Yes   |
| Remote Alarm Access                       | Yes   |
| Outside Material                          | Color Sprayed Steel                               |
| Inside Material                           | 304 Stainless Steel                               |
| Castor Wheels                             | Included  |
| Compartment Door                          | 2   |
| RS485 Access                              | Yes   |
| REFRIGERATION SYSTEM                      |   |
| Refrigerant                               | HC (R290 & R170)                                  |
| Temperature Controller                    | Microprocessor                                    |
| Cooling System                            | Cascade   |
| Sensor                                    | PTC   |
| Pull Down Time *(min)                     | 178   |
| Warm Up Time * (min)                      | 273   |
| Compressor brand/ QTY                     | SECOP / 2   |
| Capacity (L/cu.ft)                        | 838 / 29.59                                       |
| Insulation                                | Vacuum Insulation Panel + Polyurethane Rigid Foam |
| Inner Door Material/ Quality              | Foamed SS 304/2                                   |
| Racks                                     | 24(5x5)   |
| Boxes (2inches)                           | 600   |
| Sample (2ml)                              | 60000   |
| ELECTRICAL DATA                           |   |
| Voltage/ Frequency (V/Hz)                 | 220V / 50Hz or 60Hz                               |
| Power (W)                                 | 720   |
| Current (A)                               | 8.64A   |
| Power Consumption (kWh/24h)               | 16.47   |
| Noise (db)                                | 53  |
| DIMENSIONS                                |   |
| Package Size (WxDxH) mm                   | 1262 x 1098 x 2185                                |
| Exterior Size (WxDxH) mm                  | 1179 x 1135 x 1994.5                              |
| Interior Size (WxDxH) mm                  | 894 x 718 x 1310                                  |
| Shipping CBM                              | 3.12  |
| NW./GW/ (kg)                              | 397/430   |
| 20GP/40GP/40HQ                            | 8/18/18   |
| ACCESSORIES                               |   |
| Chart Recorder                            | Optional  |
| Data Logger                               | Optional  |
| CO2 Back Up System                        | Optional  |
| LN2 Back UP System                        | Optional  |
| ALARMS                                    |   |
| High / Low Temperature                    |   |
| Power Failure                             |   |
| Abnormal Voltage                          |   |
| Sensor Error                              |   |
| Filter Screen Check                       |   |
| Thermostat Failure                        |   |
| Low Battery                               |   |
| Condenser Cleaning                        |   |
| High Ambient Temperature                  |   |
| Door Ajar                                 |   |
| Power failure backup system(alarm): 72hrs |   |

Sofia Ref. LLC

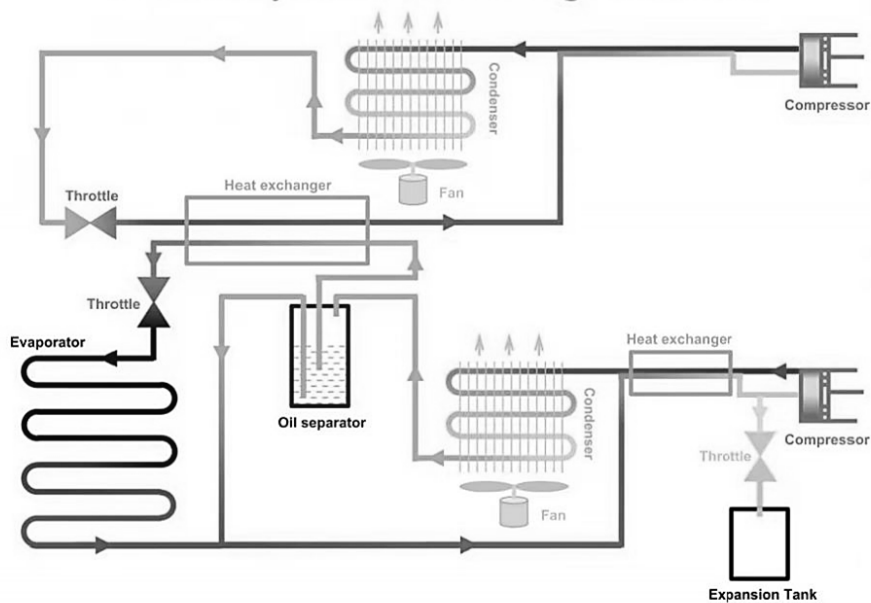


Sales@sofiaref.com

# SHOP DRAWING



# CASCADE SYSTEM EXCHANGE CIRCULATION



Sotia Ref. LLC



Sales@sofiaref.com