

-86°C SUPER FREEZER SOFUPSF-588 AC

INTERNAL FEATURES



Stepped door frame design
Reduce cold air leakage and ice buildup

Keep the cold inside
Advanced internal VIP panels flexible and efficient silicone sealings firmly lock the cold air inside.

Access port
For extra monitoring device

Enhanced shelf design
SS shelf supports 50kg

Compartment doors
Stainless steel and 27mm thick PU foam-filled inner doors for better insulation

Complete SS chamber
Robust stainless steel body for high sample safety and easy cleaning

Vacuum release port
For quick re-access to samples

Inner door gaskets
Low temp. resistance flexible silicone sealings recude cold leakage

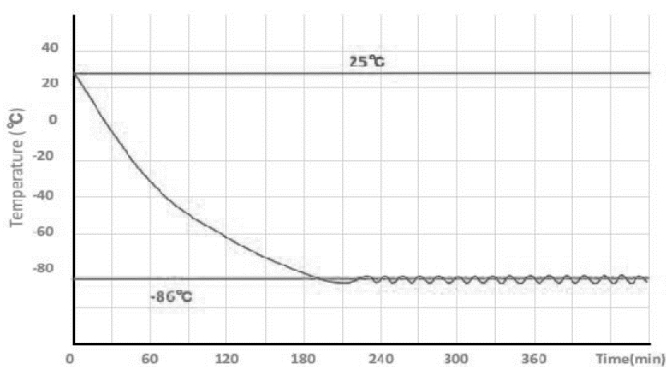
Lock the cold air
Inner door closing pressure can be adjusted by the handle

Detachable design
Inner doors can be easy removal and cleaning

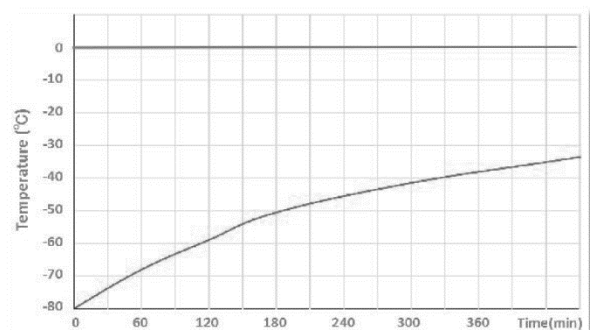
Door frame heating
Effectively prevents ice buildup

Heavy duty hinges
Garantee 10 years of door body without deformation

TYPICAL PERFORMANCE CHARACTERISTICS IN 25°C AMBIENT



Pull down times.



Warm up times.

SPECIFICATIONS

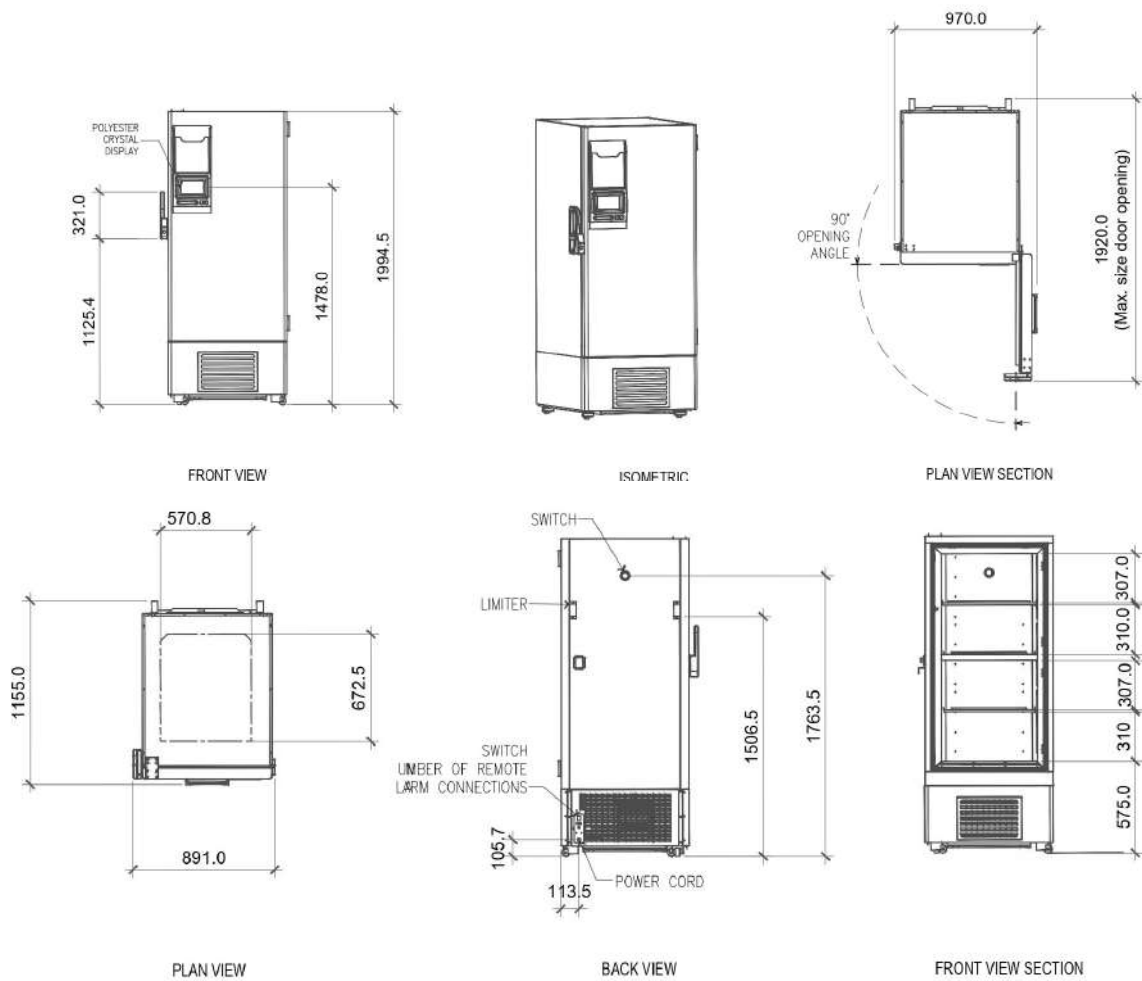
BASIC	
Stainless Steel Shelves Quantity	3
Cooling Method	Direct Cooling
Defrost	Manual
Temperature Range (°C)	-40~-86
Ambient temperature (°C)	10~32
Display	LED Digital
Access port QTY/ Diameter	1 / 25MM
USB Interface	Yes / 1
Remote Alarm Access	Yes / 1
Outside Material	Color Sprayed Steel
Inside Material	304 Stainless Steel
Castor Wheels	Included
Compartment Door	2
RS485 Access	Yes / 1
REFRIGERATION SYSTEM	
Refrigerant	R4001 (mixed gas)
Temperature Controller	Microprocessor
Cooling System	Auto-cascade
Sensor	PTC 100
Pull Down Time *(min)	178
Warm Up Time * (min)	273
Compressor brand/ QTY	SECOP / 2
Capacity (L/cu.ft)	588 / 20.76
Insulation	Vacuum Insulation Panel + Polyurethane Rigid Foam
Inner Door Material/ Quality	Foamed SS 304/2
Racks	16(5x5)
Boxes (2inches)	400
Sample (2ml)	40000
ELECTRICAL DATA	
Voltage/ Frequency (V/Hz)	220V / 50Hz or 60Hz
Power (W)	1500
Current (A)	10.35A
Power Consumption (kWh/24h)	16.02
Noise (db)	53
DIMENSIONS	
Package Size (WxDxH) mm	970 x 1138 x 2195
Exterior Size (WxDxH) mm	891 x 1155 x 1994.5
Interior Size (WxDxH) mm	606 x 738 x 1310
Shipping CBM	2.42
NW./GW/ (kg)	283/345.5
20GP/40GP/40HQ	12/24/24
ACCESSORIES	
Chart Recorder	Optional
Data Logger	Optional
CO2 Back Up System	Optional
LN2 Back UP System	Optional
ALARMS	
High / Low Temperature	
Power Failure	
Abnormal Voltage	
Sensor Error	
Filter Screen Check	
Thermostat Failure	
Low Battery	
Condenser Cleaning	
High Ambient Temperature	
Door Ajar	
Power failure backup system(alarm): 72hrs	

Sofia Ref. LLC

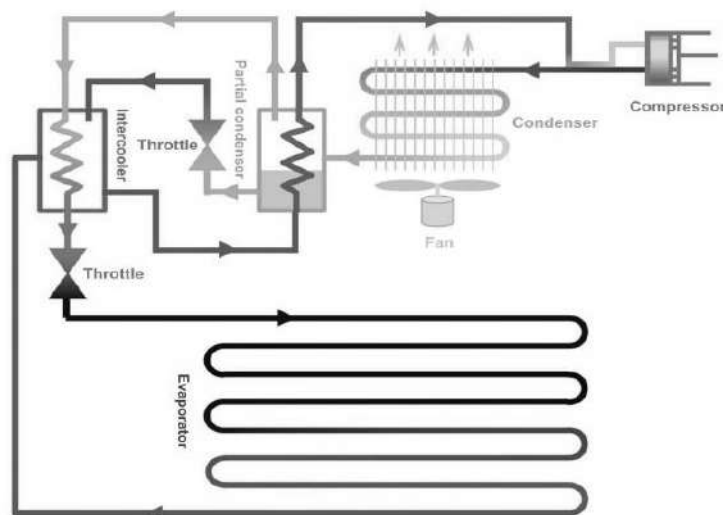


Sales@sofiaref.com

SHOP DRAWING



AUTO-CASCADE SYSTEM EXCHANGE CIRCULATION



Sofia Ref. LLC



Sales@sofiaref.com