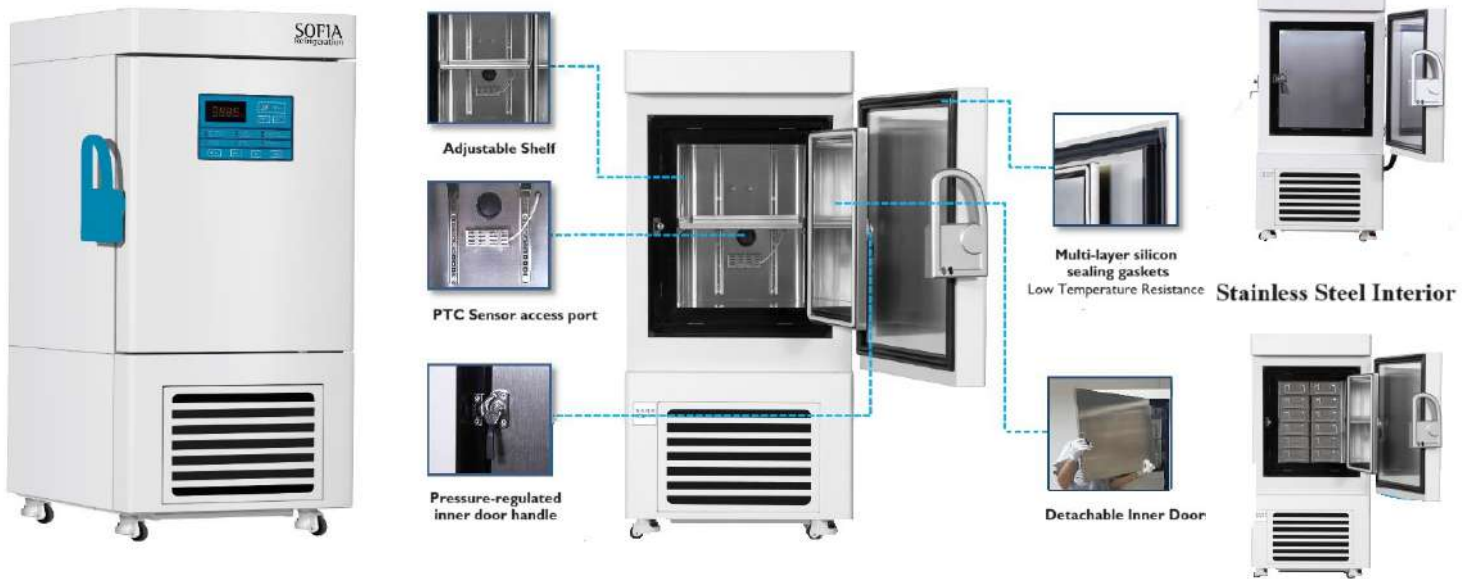
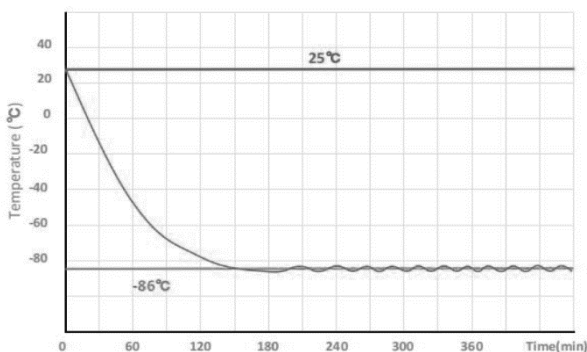


-86°C SUPER FREEZER SOFUPSF-58 AC

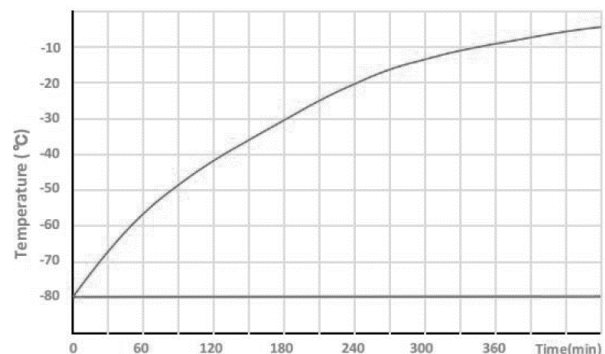
INTERNAL FEATURES



TYPICAL PERFORMANCE CHARACTERISTICS IN 25°C AMBIENT



Pull down times.



Warm up times.

SPECIFICATIONS

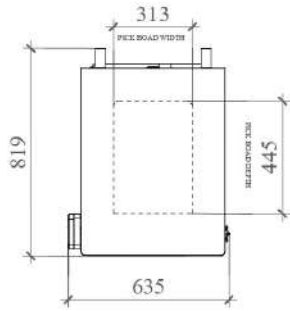
BASIC	
Stainless Steel Shelves Quantity	2
Cooling Method	Direct Cooling
Defrost	Manual
Temperature Range (°C)	-40~-86
Ambient temperature (°C)	10~32
Display	LED Digital
Access port QTY/ Diameter	1 / 25MM
USB Interface	Yes/1
Remote Alarm Access	Yes/1
Outside Material	Color sprayed steel
Inside Material	304 Stainless Steel
Castor Wheels	Included
Compartment Door	2
RS485 Access	Yes/1
REFRIGERATION SYSTEM	
Refrigerant	R4001 (mixed gas)
Temperature Controller	Microprocessor
Cooling System	Auto-cascade
Sensor	PTC 100
Pull down time *(min)	143
Warm up time *(min)	140
Compressor brand/ QTY	SECOP / 1
Capacity (L/cu.ft)	58 / 2.0
Insulation	Polyurethane Rigid Foam
Inner Door material/ Quality	Foamed SS 304/3
Racks	2(6x2)
Boxes (2inches)	24
Sample (2ml)	2400
ELECTRICAL DATA	
Voltage/ Frequency (V/Hz)	220V / 50Hz or 60Hz
Power (W)	442
Current (A)	3.18A
Power Consumption (kWh/24h)	6.09
Noise (db)	50
DIMENSIONS	
Package Size (WxDxH) mm	730x845x1400
Exterior Size (WxDxH) mm	635x819x1212
Interior Size (WxDxH) mm	330x453x410
Shipping CBM	0.9
NW./GW/ (kg)	112/146
20GP/40GP/40HQ	21/43/43
ACCESSORIES	
Chart Recorder	Optional
Data Logger	Optional
CO2 Back Up System	Optional
LN2 Back UP System	Optional
ALARMS	
High / Low Temperature	
Power Failure	
Abnormal Voltage	
Sensor Error	
Filter Screen Check	
Thermostat Failure	
Low Battery	
Condenser Cleaning	
High Ambient Temperature	
Door Ajar	
Power failure backup system(alarm): 72hrs	

Sofia Ref. LLC

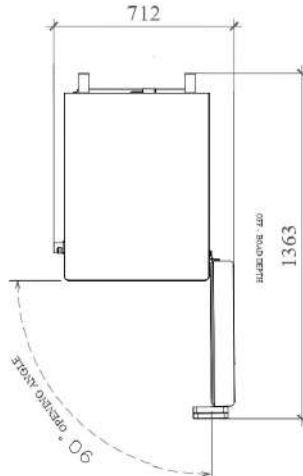


Sales@sofiaref.com

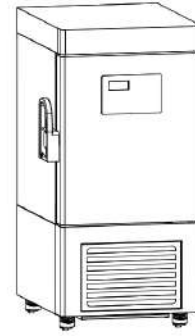
SHOP DRAWING



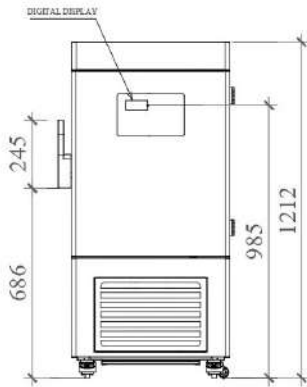
② PLAN VIEW



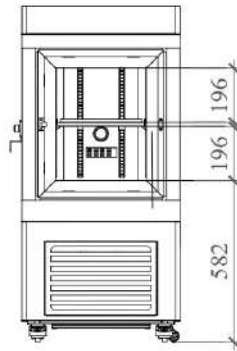
SECTIONAL PLAN VIEW



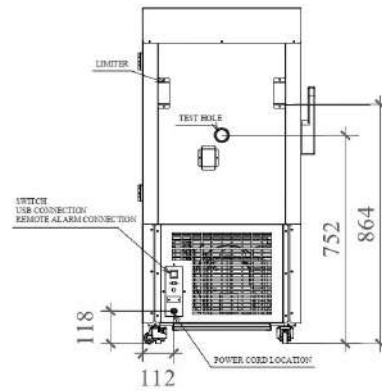
① ISOMETRIC VIEW



③ FRONT VIEW

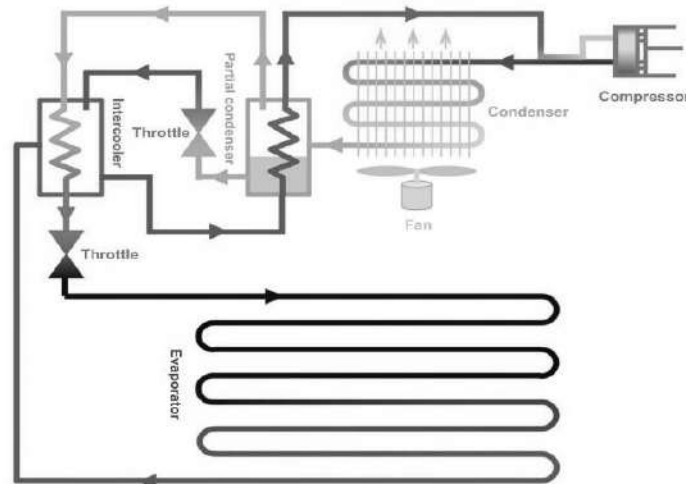


SECTIONAL FRONT VIEW



④ BACK VIEW

AUTO-CASCADE SYSTEM EXCHANGE CIRCULATION



Sofia Ref. LLC



Sales@sofiaref.com