

-86°C SUPER FREEZER

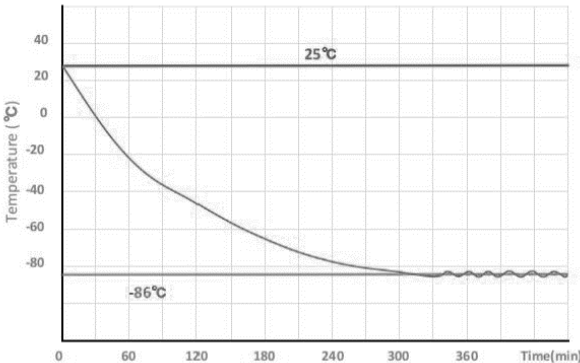
SOFUPSF-408 AC

INTERNAL FEATURES

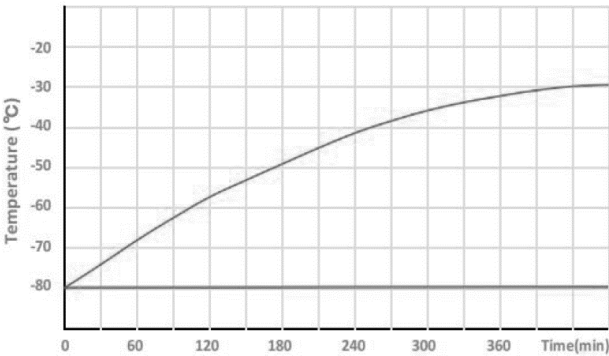


- Stepped door frame design**
Reduce cold air leakage and ice buildup
- Keep the cold inside**
Advanced internal VIP panels flexible and efficient silicone sealings firmly lock the cold air inside.
- Access port**
For extra monitoring device
- Enhanced shelf design**
SS shelf supports 50kg
- Compartment doors**
Stainless steel and 27mm thick PU foam-filled inner doors for better insulation
- Complete SS chamber**
Robust stainless steel body for high sample safety and easy cleaning
- Vacuum release port**
For quick re-access to samples
- Inner door gaskets**
Low temp. resistance flexible silicone sealings recude cold leakage
- Lock the cold air**
Inner door closing pressure can be adjusted by the handle
- Heavy duty hinges**
Garantee 10 years of door body without deformation
- Detachable design**
Inner doors can be easy removal and cleaning
- Door frame heating**
Effectively prevents ice buildup

TYPICAL PERFORMANCE CHARACTERISTICS IN 25°C AMBIENT



Pull down times.



Warm up times.

SPECIFICATIONS

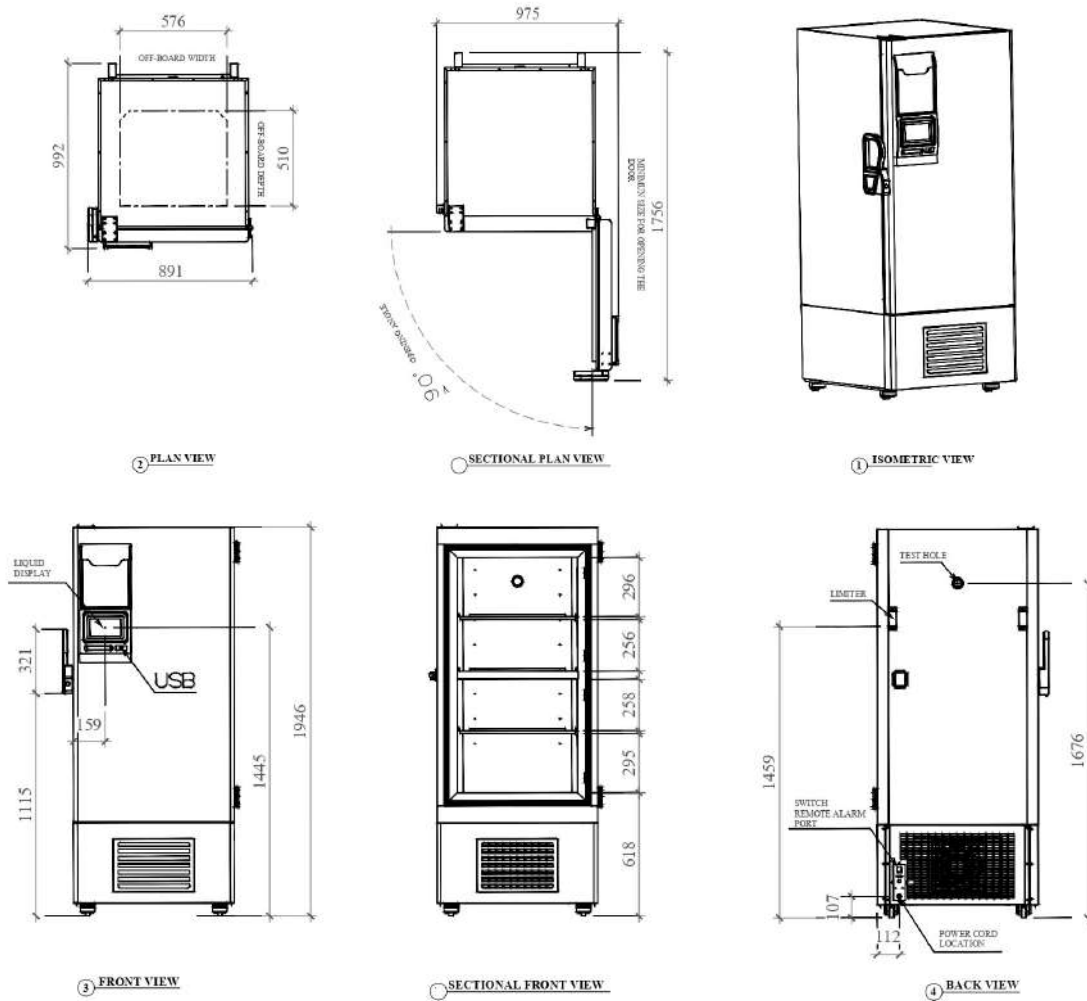
BASIC	
Stainless Steel Shelves Quantity	3
Cooling Method	Direct Cooling
Defrost	Manual
Temperature Range (°C)	-40~-86
Ambient temperature (°C)	10~32
Display	LED Digital
Access port QTY/ Diameter	1 / 25MM
USB Interface	Yes / I
Remote Alarm Access	Yes / I
Outside Material	Color Sprayed Steel
Inside Material	304 Stainless Steel
Castor Wheels	Included
Compartment Door	2
RS485 Access	Yes / I
REFRIGERATION SYSTEM	
Refrigerant	R4001 (mixed gas)
Temperature Controller	Microprocessor
Cooling System	Auto-cascade
Sensor	PTC 100
Pull Down Time *(min)	245
Warm Up Time * (min)	234
Compressor brand/ QTY	SECOP / 2
Capacity (L/cu.ft)	408 / 14.40
Insulation	Vacuum Insulation Panel + Polyurethane Rigid Foam
Inner Door Material/ Quality	Foamed SS 304/2
Racks	8(5x4) + 8(4x4)
Boxes (2inches)	288
Sample (2ml)	28800
ELECTRICAL DATA	
Voltage/ Frequency (V/Hz)	220V / 50Hz or 60Hz
Power (W)	890
Current (A)	5.34A
Power Consumption (kWh/24h)	12.82
Noise (db)	53
DIMENSIONS	
Package Size (WxDxH) mm	954 x 955 x 2094
Exterior Size (WxDxH) mm	891 x 992 x 1946
Interior Size (WxDxH) mm	606 x 575 x 1180
Shipping CBM	1.92
NW./GW/ (kg)	235/279.5
20GP/40GP/40HQ	12/24/24
ACCESSORIES	
Chart Recorder	Optional
Data Logger	Optional
CO2 Back Up System	Optional
LN2 Back UP System	Optional
ALARMS	
High / Low Temperature	
Power Failure	
Abnormal Voltage	
Sensor Error	
Filter Screen Check	
Thermostat Failure	
Low Battery	
Condenser Cleaning	
High Ambient Temperature	
Door Ajar	
Power failure backup system(alarm): 72hrs	

Sofia Ref. LLC

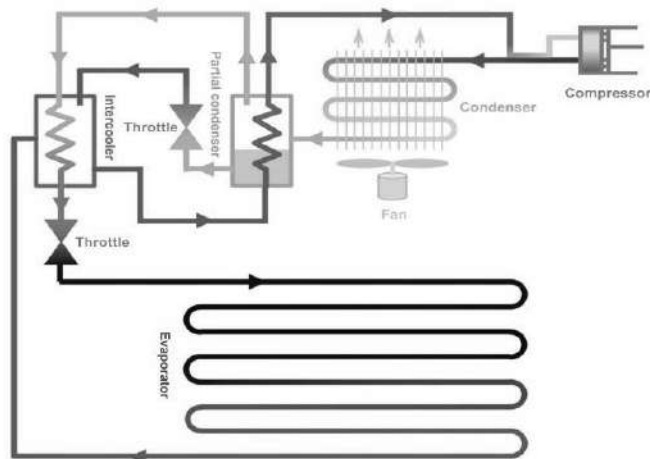


Sales@sofiaref.com

SHOP DRAWING



AUTO-CASCADE SYSTEM EXCHANGE CIRCULATION



Sofia Ref. LLC



Sales@sofiaref.com