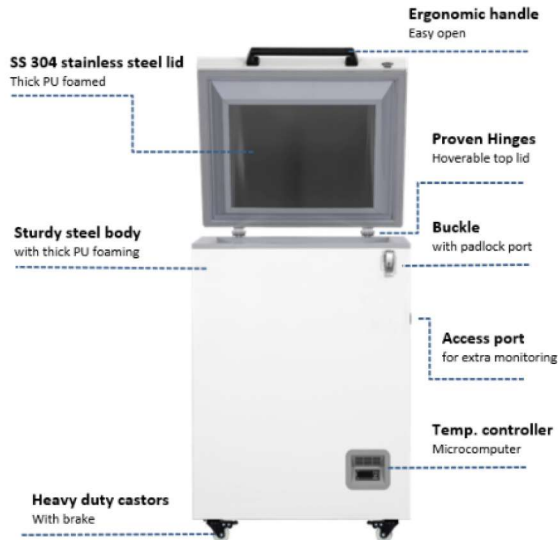


-86°C SUPER FREEZER SOFCSF-105

INTERNAL FEATURES

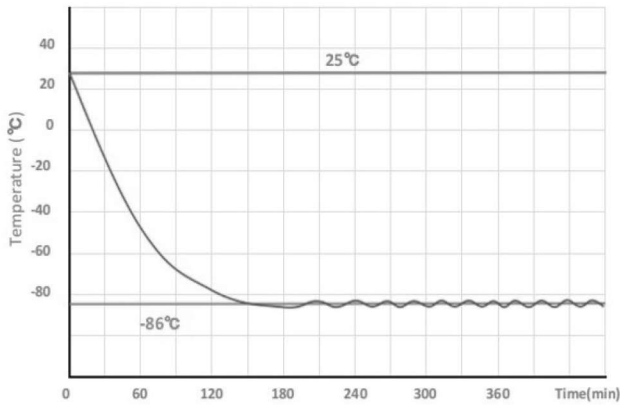


The ULT freezers are made of color sprayed anti-bacterial and anti-corrosion cold-rolled steel. Various configurations and humanized designs bring great convenience to users.

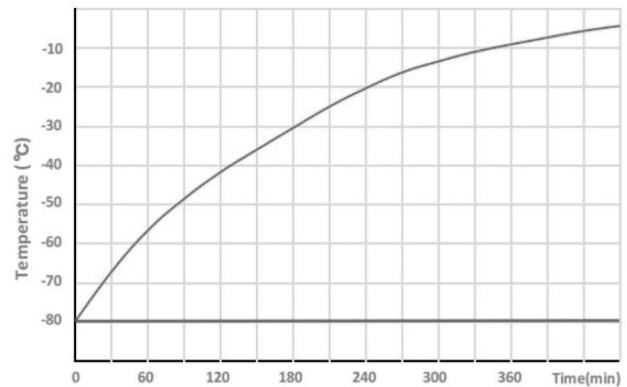
Double-layer external condenser for better heat dissipation



TYPICAL PERFORMANCE CHARACTERISTICS IN 25°C AMBIENT



Pull down times.



Warm up times.

SPECIFICATIONS

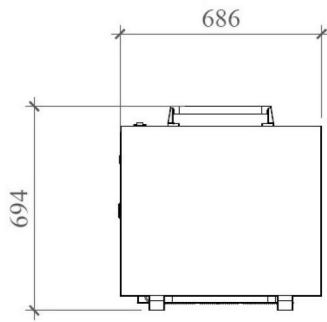
BASIC	
Cooling Method	Direct Cooling
Defrost	Manual
Temperature Range (°C)	-40~-86
Ambient temperature (°C)	10~32
Display	LED DIGITAL
Access port QTY/ Diameter	1 / 25MM
USB Interface	N/A
Remote Alarm Access	N/A
Outside Material	Color sprayed steel
Inside Material	304 Stainless Steel
Castor Wheels	Included
Power Failure Backup	N/A
REFRIGERATION SYSTEM	
Refrigerant	R4001 (mixed gas)
Temperature Controller	Microprocessor
Cooling System	Auto-cascade
Sensor	PTC 100
Pull down time *(min)	164
Warm up time * (min)	85
Compressor brand/ QTY	CUBIGEL/1
Capacity (L/cu.ft)	105 / 3.7
Insulation	Polyurethane Rigid Foam
Racks	2(11x2) + 2(6X1)
Boxes (2inches)	34
Sample (2ml)	3400
ELECTRICAL DATA	
Voltage/ Frequency (V/Hz)	220V / 50Hz or 60Hz
Power (W)	500
Current (A)	2.53A
Power Consumption (kWh/24h)	4.79
Noise (db)	50
DIMENSIONS	
Package Size (WxDxH) mm	770 x 705 x 1090
Exterior Size (WxDxH) mm	686 x 694 x 942
Interior Size (WxDxH) mm	480 x 380 x 665
Shipping CBM	0.6
NW./GW/ (kg)	65/70
20GP/40GP/40HQ	24/51/51
ACCESSORIES	
Data Logger	Optional
ALARMS	
High / Low Temperature	
Sensor Error	
Thermostat Failure	

Sofia Ref. LLC

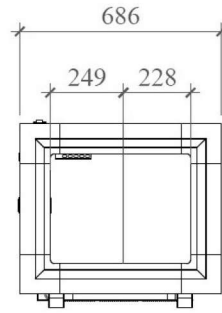


Sales@sofiaref.com

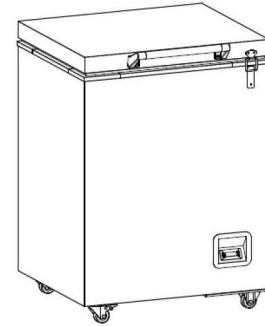
SHOP DRAWINGS



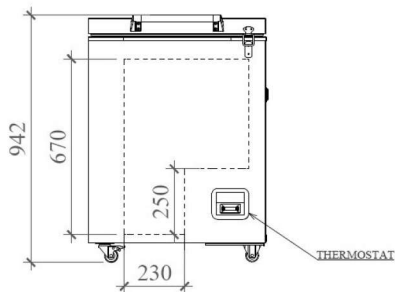
2 PLAN VIEW



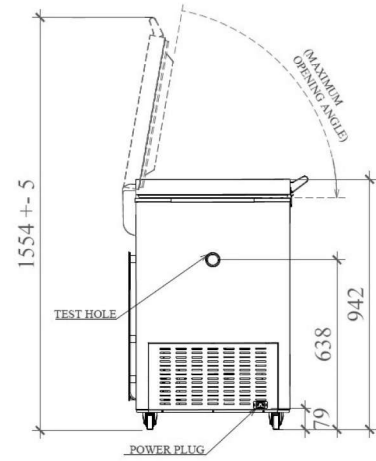
SECTIONAL PLAN VIEW



1 ISOMETRIC VIEW

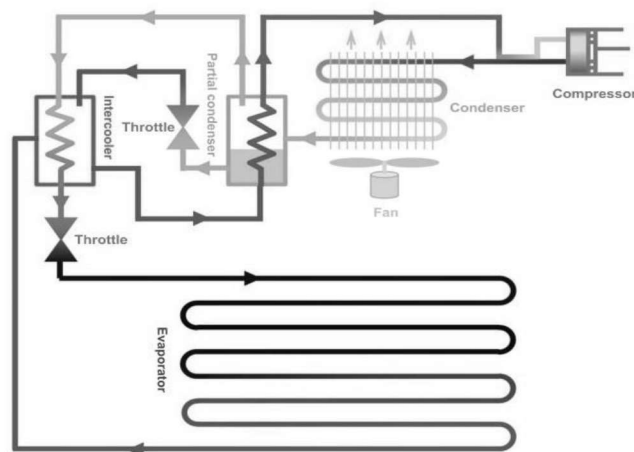


3 FRONT VIEW



4 SIDE VIEW

AUTO-CASCADE SYSTEM EXCHANGE CIRCULATION



Sofia Ref. LLC



Sales@sofiaref.com