

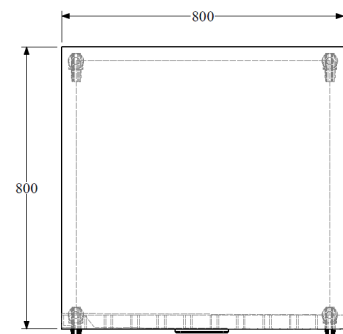
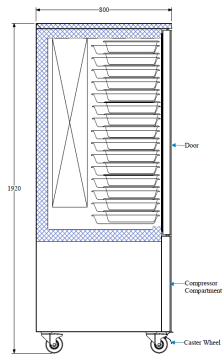
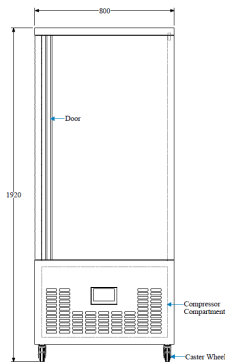
BLAST CHILLER-FREEZER-15 TRAYS

SOFBCF-15



Details

- Grade 304 stainless steel interior and exterior
- Forced air cooling system
- 85 mm insulation thickness
- CFC free refrigerant R404A
- EVCO digital controller
- Built-in shelf brackets
- Auto defrosting system
- Professional blast freezer thermostat, with HACCP functions
- Stainless steel tray brackets for 1/1 GN pan or 60x40 cm baking trays
- Removable door gasket
- Blast Chilling: Max 1.5 hours from +90°C to +3°C
- Blast Freezing: Max 4.0 hours from +90°C to -18°C



Specifications

| Model | Exterior Dimensions WxDxH (mm) | Capacity in Litres | Power (W) | Voltage Supply | Frequency (Hz) | Temperature Range (°C) | Enviromental Temperature (°C) | Mode of Refrigeration |
|-----------|-----------------------------------|-----------------------|--------------|-------------------|-------------------|---------------------------|----------------------------------|--------------------------|
| SOFBCF-15 | 800x800x1920 | 305L /15 trays | 1160 | 220~240V - 1PH | 50 or 60 | -40~+3 | 3 2 | Ventilated |

Sofia Ref. LLC



Sales@sofiaref.com