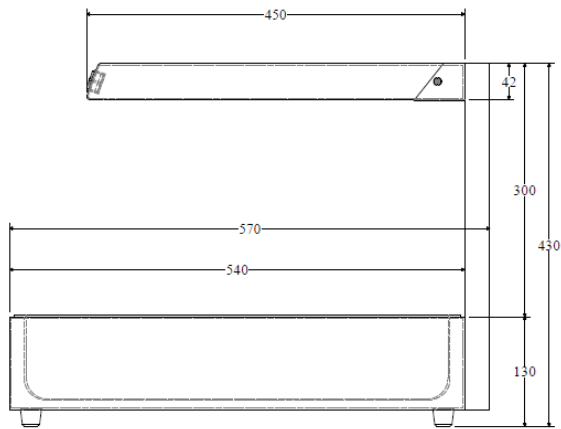
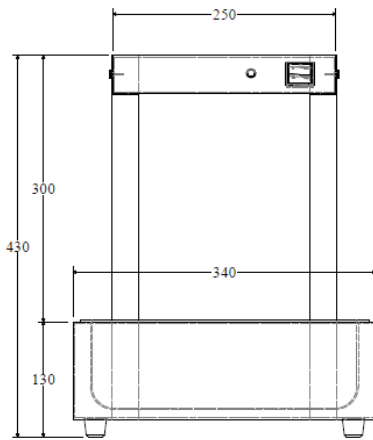


# FRY DUMP WARMER SOFFW-600



## Details

- Stainless steel construction
- High-efficient, energy saving
- Heat and light display
- Thermostat control and timer control
- Base includes food pan
- Easy-to-use light and heat switches on the front of the unit



## Specifications

Model	Exterior Dimensions WxDxH (mm)	Capacity	Power (W)	Frequency (Hz)	Temperature Range (°C)
SOFFW-600	340x570x430	1 x 1/1 GN	600	50/60	80

Sofia Ref. LLC

Sheikh Zayed Rd. Dubai, U.A.E - Sajaah Industrial Area Sharjah, U.A.E - Tashkeel Tower Riyadh, K.S.A



Sales@sofiaref.com