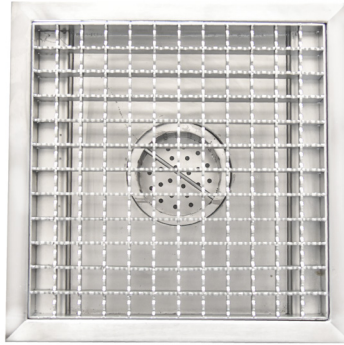


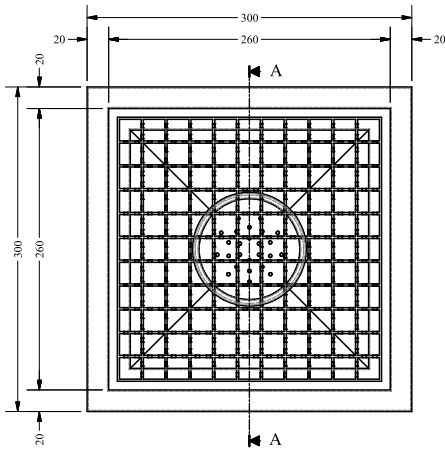
FLOOR GRATING

SOFFG-3030

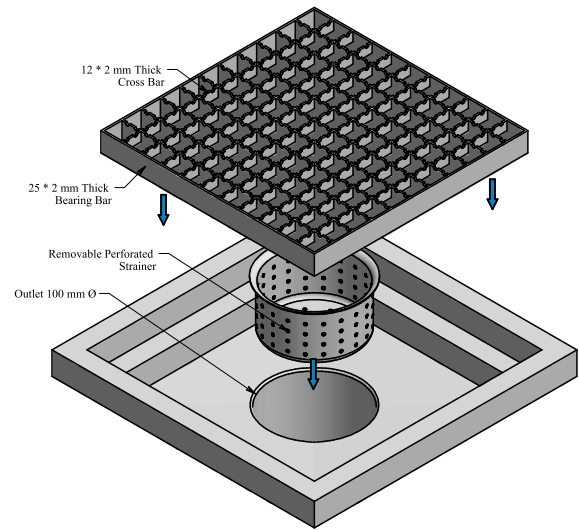


Details

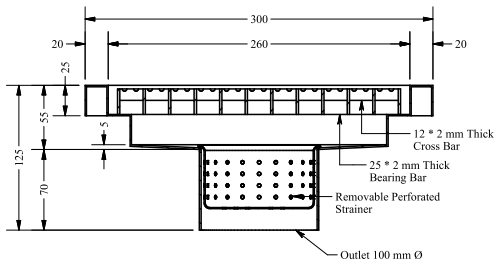
- 304# stainless steel wedge wire drain
- Corrosion resistant
- Hygiene joints to prevent bacterial contamination
- Dimensions: 300*300*125 mm
- Slip-resistant grate
- Outlet 100mm fitting, removable perforated strainer for quick and efficient cleaning



② TOP VIEW



① ISOMETRIC VIEW



③ SECTION VIEW